



CAN INDUSTRIAL



WWW.CANINDUSTRIAL.COM
1-888-742-4550

**BECOME
OUR
DISTRIBUTOR**



**50,000 PANELS
IN-STOCK ANYTIME!**



ABOUT US

CAN INDUSTRIAL

Discover Can Industrial Supplies, your trusted source for Industrial Fencing Supplies since 2006.

We are committed to providing exceptional value through competitive pricing, reliable delivery, and uncompromising quality.

Our mission is to streamline your operations and save you time and money.

Our comprehensive range of heavy-duty, innovative products, designed in Canada, meets the highest standards of functionality and durability.

We take pride in ensuring your satisfaction, constantly expanding our product range to meet your evolving needs.

With our unwavering commitment to quality and safety, we provide you with the utmost confidence in every purchase.

Thank you for choosing Can Industrial Supplies as your trusted partner. We are here to exceed your expectations and serve you with the finest products.

With our knowledgeable team, we offer expert advice and cost-saving options to meet your specific requirements. We excel in delivering tailored fencing solutions across diverse industries.





INDEX

3.5' H x 8' - TEMPORARY FENCE PANEL.....	3
4' H x 8' L - TEMPORARY FENCE PANEL.....	4
4' H x 8' L - CROWD CONTROL BARRIER.....	5
6' H x 8' L - ECONOMY TEMPORARY FENCE PANEL.....	6
6' H x 10' L - STANDARD TEMPORARY FENCE PANEL.....	7
6' H x 10' L - PREMIUM TEMPORARY FENCE PANEL.....	8
6' H x 10' L - AAA TEMPORARY FENCE PANEL.....	9
6' H x 10' L - TEMPORARY MAN GATE PANEL.....	10
8' H x 8' L - TEMPORARY FENCE PANEL.....	11
6' H x 12' L OR 8' H x 12' L - GALVANIZED CHAIN LINK FENCE PANEL....	12
PREMIUM CHAIN LINK FENCE SET (500 LINEAR FEET).....	13
24 FEET CONSTRUCTION SITE SECURITY GATE.....	14
CASTOR WHEELS.....	15
6' x 50' PRIVACY SCREEN - DARK GREEN.....	16
SECURITY SIDE CLAMPS.....	17

CONTACT US!



Website: www.canindustrial.com
Telephone: +1 (888) 742-4550
Email Address: Infocanindustrial@gmail.com

Information Subject to Change Without Notice
Dimensions and Weights are Approximate
© All Rights Reserved - Can Industrial 2023

3'.5" H x 8' L - Black Fence Panel



SPECIFICATIONS

HEIGHT x LENGTH	3.5' x 8'
MESH OPENING	5" x 36"
BASE PLATE DIMENSIONS	18" x 4"
TOP CONNECTOR CONNECTION TYPE	ZIP-TIE
ZIP-TIE LENGTH	20"
APPROXIMATE SET WEIGHT (1 PANEL + 1 BASE PLATE + 1 TOP CONNECTOR)	~ 30 LBS (13.6 KG)



CONTACT US!

Website: www.canindustrial.com
 Telephone: +1 (888) 742-4550
 Email Address: Infocanindustrial@gmail.com

Information Subject to Change Without Notice
 Dimensions and Weights are Approximate
 © All Rights Reserved - Can Industrial 2023

4' H x 8' L - Standard Galvanized Square Tube Fence Panel



STANDARD BASE & TOP

BASE PLATE LENGTH 24"
 BASE PLATE WIDTH 4"
 BASE PLATE THICKNESS 7mm
 SPRINKLE HEIGHT 6.5"
 TOP CONNECTOR HEIGHT 6"
 TOP CONNECTOR WIDTH 5"

SPECIFICATIONS

HEIGHT x LENGTH	4' x 8'
MESH OPENING	2" x 4"
BASE PLATE DIMENSIONS	24" x 4"
APPROXIMATE SET WEIGHT (1 PANEL + 1 BASE PLATE + 1 TOP CONNECTOR)	~ 30 LBS (13.6 KG)



CONTACT US!

Website: www.canindustrial.com
 Telephone: +1 (888) 742-4550
 Email Address: Infocanindustrial@gmail.com

Information Subject to Change Without Notice
 Dimensions and Weights are Approximate
 © All Rights Reserved - Can Industrial 2023

4' H x 8' L - Crowd Control Barrier



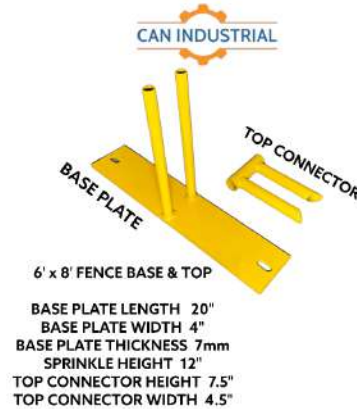
SPECIFICATIONS

HEIGHT X LENGTH	4' X 8'
MESH OPENING	4.5" X 39"
BASE PLATE TYPE	WELDED V-FOOT
CONNECTION TYPE	INTERLOCKING SYSTEM
APPROXIMATE WEIGHT	~ 30 LBS (13.6 KG)



CONTACT US!

6' H x 8' L - PVC Coated Yellow Round Tube Fence Panel



SPECIFICATIONS

HEIGHT x LENGTH	6' x 8'
MESH OPENING	2.5" x 5.5"
TUBE THICKNESS	1.3 MM
WIRE DIAMETER	3.0 MM
BASE PLATE DIMENSIONS	20" x 4"
BASE PLATE THICKNESS	7 MM
APPROXIMATE SET WEIGHT (1 PANEL + 1 BASE PLATE + 1 TOP CONNECTOR)	~ 35 LBS (15.9 KG)

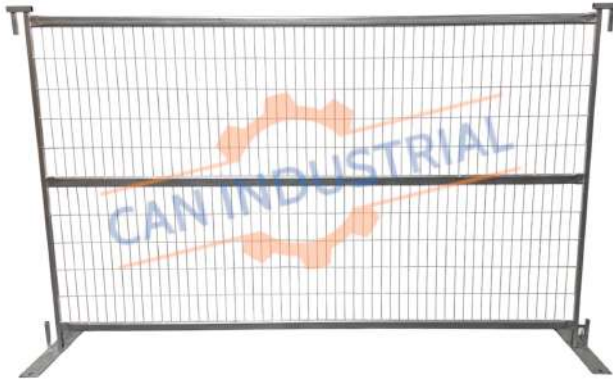


CONTACT US!

Website: www.canindustrial.com
 Telephone: +1 (888) 742-4550
 Email Address: Infocanindustrial@gmail.com

Information Subject to Change Without Notice
 Dimensions and Weights are Approximate
 © All Rights Reserved - Can Industrial 2023

6' H x 10' L - Standard Galvanized Square Tube Fence Panel



STANDARD BASE & TOP

BASE PLATE LENGTH 24"
BASE PLATE WIDTH 4"
BASE PLATE THICKNESS 7mm
SPRINKLE HEIGHT 6.5"
TOP CONNECTOR HEIGHT 6"
TOP CONNECTOR WIDTH 5"

SPECIFICATIONS

HEIGHT x LENGTH	6' x 10'
MESH OPENING	2" x 6"
TUBE THICKNESS	1.3 MM
WIRE DIAMETER	3.0 MM
BASE PLATE DIMENSIONS	24" x 4"
BASE PLATE THICKNESS	7 MM
APPROXIMATE SET WEIGHT (1 PANEL + 1 BASE PLATE + 1 TOP CONNECTOR)	~ 50 LBS (22.7 KG)



CONTACT US!

Website: www.canindustrial.com
Telephone: +1 (888) 742-4550
Email Address: Infocanindustrial@gmail.com

Information Subject to Change Without Notice
Dimensions and Weights are Approximate
© All Rights Reserved - Can Industrial 2023

6' H x 10' L - Premium Galvanized Square Tube Fence Panel



SPECIFICATIONS

HEIGHT x LENGTH	6' x 10'
MESH OPENING	2" x 6"
TUBE THICKNESS	1.3 MM
WIRE DIAMETER	3.5 MM
BASE PLATE DIMENSIONS	28" x 4"
BASE PLATE THICKNESS	10 MM
APPROXIMATE SET WEIGHT (1 PANEL + 1 BASE PLATE + 1 TOP CONNECTOR)	~ 60 LBS (27.2 KG)

CONTACT US!

Website: www.canindust
 Telephone: +1 (888) 742-4550
 Email Address: Infocanindustrial@gmail.com



6' H x 10' L - AAA Galvanized Square Tube Fence Panel



SPECIFICATIONS

HEIGHT x LENGTH	6' x 10'
MESH OPENING	2" x 5.5"
TUBE THICKNESS	1.5 MM
WIRE DIAMETER	3.5 MM
BASE PLATE DIMENSIONS	28" x 4"
BASE PLATE THICKNESS	10 MM
APPROXIMATE SET WEIGHT (1 PANEL + 1 BASE PLATE + 1 TOP CONNECTOR)	~ 70 LBS (31.8 KG)



CONTACT US!

Website: www.canindustrial.com
 Telephone: +1 (888) 742-4550
 Email Address: Infocanindustrial@gmail.com

Information Subject to Change Without Notice
 Dimensions and Weights are Approximate
 © All Rights Reserved - Can Industrial 2023

6' H x 10' L - Galvanized Square Tube Man Gate



SPECIFICATIONS

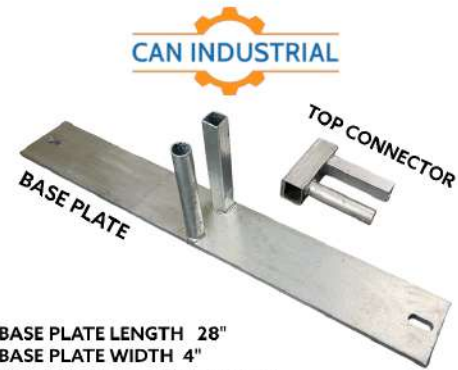
HEIGHT x LENGTH	6' x 10'
MESH OPENING	2" x 4"
TUBE THICKNESS	1.5 MM
WIRE DIAMETER	3.5 MM
BASE PLATE DIMENSIONS	28" x 4"
BASE PLATE THICKNESS	10 MM
APPROXIMATE SET WEIGHT (1 PANEL + 1 BASE PLATE + 1 TOP CONNECTOR)	~ 70 LBS (31.8 KG)

CONTACT US!

Website: www.canindustrial.com
Telephone: +1 (888) 742-4550
Email Address: Infocanindustrial@gmail.com

Information Subject to Change Without Notice
Dimensions and Weights are Approximate
© All Rights Reserved - Can Industrial 2023

8' H x 8' L - Premium Galvanized Square Tube Fence Panel



BASE PLATE LENGTH 28"
 BASE PLATE WIDTH 4"
 BASE PLATE THICKNESS 10mm
 SPRINKLE HEIGHT 6.5"
 TOP CONNECTOR HEIGHT 6"
 TOP CONNECTOR WIDTH 5"

SPECIFICATIONS

HEIGHT x LENGTH	8' x 8'
MESH OPENING	2" x 6"
TUBE THICKNESS	1.3 MM
WIRE DIAMETER	3.5 MM
BASE PLATE DIMENSIONS	28" x 4"
BASE PLATE THICKNESS	10 MM
APPROXIMATE SET WEIGHT (1 PANEL + 1 BASE PLATE + 1 TOP CONNECTOR)	~ 70 LBS (31.75 KG)

CONTACT US!

Website: www.canindustrial.com
 Telephone: +1 (888) 742-4550
 Email Address: Infocanindustrial@gmail.com

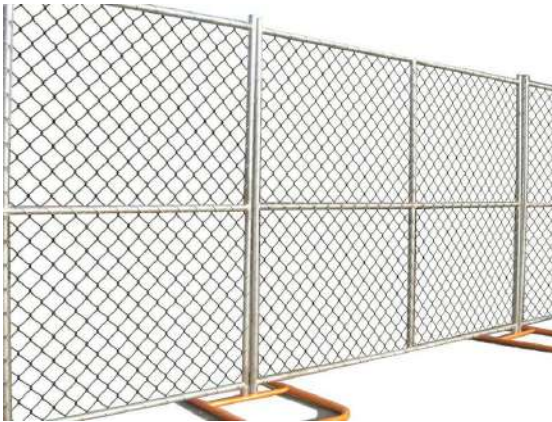
Information Subject to Change Without Notice
 Dimensions and Weights are Approximate
 © All Rights Reserved - Can Industrial 2023

6' H x 12' L **OR** 8' H x 12' L - Galvanized Chain Link Fence Panel



SPECIFICATIONS

LENGTH x WIDTH	6' H x 12' L OR 8' H x 12' L
MESH OPENING	2" x 2" OR 3.4" x 3.4" OR 2.6" x 2.6" OR 2.8" x 2.8"
APPROXIMATE WEIGHT	~ 70 - 80 LBS
MESH TYPE	CHAIN LINK MESH
WIRE DIAMETER	2.00 MM - 3.50 MM



CONTACT US!

Website: www.canindustrial.com
 Telephone: +1 (888) 742-4550
 Email Address: Infocanindustrial@gmail.com

Information Subject to Change Without Notice
 Dimensions and Weights are Approximate
 © All Rights Reserved - Can Industrial 2023

Premium Chain Link Fence Set (500 Linear Feet)



BOX WEIGHT: 3,500 LBS

SPECIFICATIONS

- 7.87 FT WITH BARBED WIRE. PROJECT IS 500 FEET INCLUDING GATE LENGTHS.
- 500 FT LESS 2 x 8 FT GATES = 484 FT
- 8 FT GATE: 2 SETS
- POSTS: 2.4" x 0.05" x 8.5 FT (46 PCS)
- CORNER POSTS & GATE POSTS: 2.4" x 0.07" (8 PCS)
- TOP RAILS: 1.5" x 0.05" x 9.85 FT (49 PCS)
- FENCE 2.4" x 2.4" MESH, DIAMETER: 0.12"
- HEIGHT: 7 FT x 50 FT (10 ROLLS)
- BARBED WIRE: 1500 FT
- BARBED WIRE ARMS, SINGLE: 42 PCS
- BARBED WIRE ARMS, DOUBLE ARMS: 4 PCS
- STEEL BARS: 24 PCS
- TIE WIRES: 615 PCS
- LINE WIRE: 0.13" (3.5 MM), 904 FT, 2 LINES
- WIRE TIGHTERS: 36 PCS
- TOP RAIL CONNECTORS: 48 PCS
- CLAMPS: 200 PCS



CONTACT US!

Website: www.canindustrial.com
 Telephone: +1 (888) 742-4550
 Email Address: Infocanindustrial@gmail.com

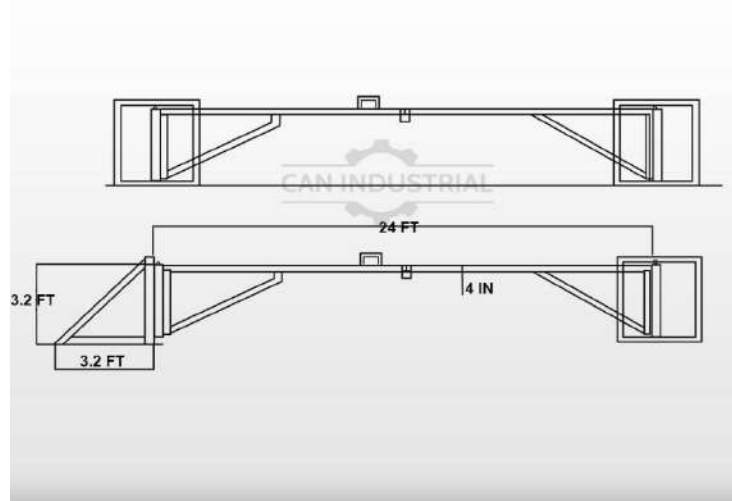
Information Subject to Change Without Notice
 Dimensions and Weights are Approximate
 © All Rights Reserved - Can Industrial 2023

24 FEET CONSTRUCTION SITE SECURITY GATE



SPECIFICATIONS

GATE HEIGHT	3.2'
LEAF LENGTH	12'
TOTAL GATE LENGTH	24'
APPROXIMATE WEIGHT	~ 265 LBS (120 KG)



CONTACT US!

CASTOR WHEELS



DESCRIPTION

Castor wheels attached to the bottom of construction fence panels allow for easy swinging open and close of the panels, providing access for vehicles and personnel. These wheels are typically made from sturdy materials such as steel or heavy-duty plastic and are designed to roll smoothly on different types of terrain.

SPECIFICATIONS

HEIGHT x LENGTH	12" x 4"
WHEEL DIAMETER	4"
APPROXIMATE WEIGHT	~ 5 LBS (2.3 KG)

CONTACT US!

6' x 50' Privacy Screen - Dark Green



DESCRIPTION

Our Dark Green Privacy Screen with Metal Grommets adds privacy to your construction site. It fits over five 6' x 10' construction fence panels and provides up to 85% blockage. Made from durable polyethylene material, installation is quick and easy with metal grommets. Create a more secluded work environment and protect your construction site with our high-quality privacy screen.

SPECIFICATIONS

HEIGHT x LENGTH	6' x 50'
APPROXIMATE BLOCKAGE	85% - 90%
APPROXIMATE WEIGHT	~ 10 LBS (4.5 KG)
COLOUR	DARK GREEN

CONTACT US!

Security Side Clamp



DESCRIPTION

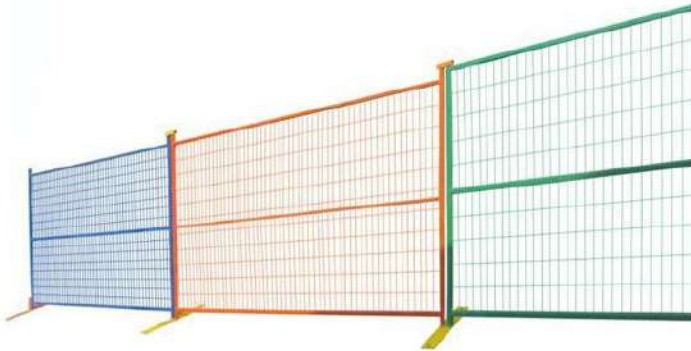
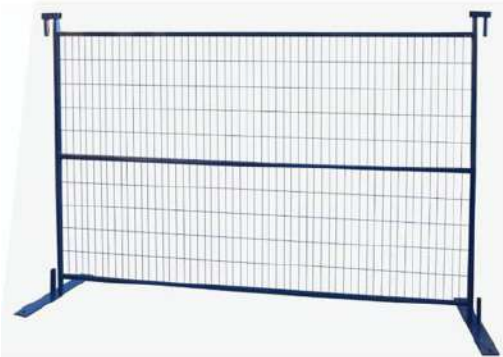
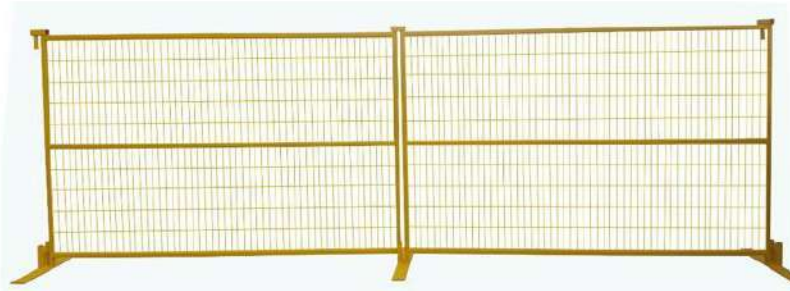
Our Security Side Clamps are a durable and cost-effective solution for stabilizing fence panels and adding an extra layer of security to your construction site. Made from high-quality materials, these clamps are easy to install and provide maximum protection and stability for your work environment. Keep your construction site safe and secure with our Security Side Clamps.

SPECIFICATIONS

HEIGHT x LENGTH	2" x 5"
APPROXIMATE WEIGHT	~ 1 LBS (0.5 KG)
TIGHTENING MECHANISM	SCREW & BOLT
COLOUR	GALVANIZED

CONTACT US!

A PEEK INTO OUR INVENTORY



Custom Colours Available!
Contact 1-888-742-4550 To Place Your Order Today!



CONTACT US!

Website: www.canindustrial.com
Telephone: +1 (888) 742-4550
Email Address: Infocanindustrial@gmail.com

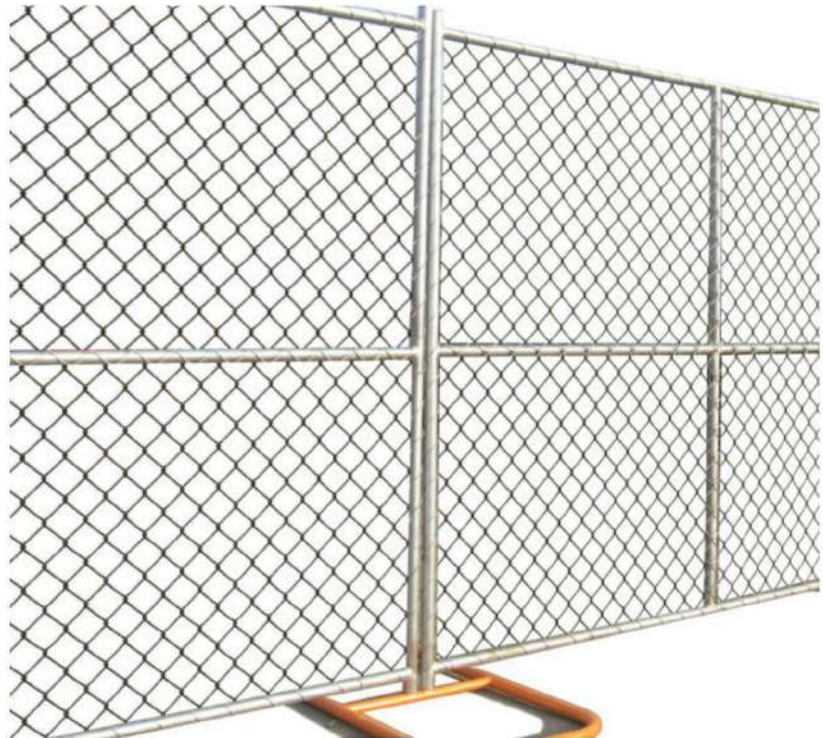
Information Subject to Change Without Notice
Dimensions and Weights are Approximate
© All Rights Reserved - Can Industrial 2023



**Custom
Orders
Available!**



**Contact For
More
Information!
1-888-742-4550**



CONTACT US!

Website: www.canindustrial.com
Telephone: +1 (888) 742-4550
Email Address: Infocanindustrial@gmail.com



Information Subject to Change Without Notice
Dimensions and Weights are Approximate
© All Rights Reserved - Can Industrial 2023



Chain Link
Fencing
Available!

CONTACT US!

Website: www.canindustrial.com
Telephone: +1 (888) 742-4550
Email Address: Infocanindustrial@gmail.com



CONTACT US!

Website: www.canindustrial.com
Telephone: +1 (888) 742-4550
Email Address: Infocanindustrial@gmail.com

Information Subject to Change Without Notice
Dimensions and Weights are Approximate
© All Rights Reserved - Can Industrial 2023

WHY PURCHASE FROM CAN INDUSTRIAL?

HIGH QUALITY MATERIALS - DURABLE AND SECURE (ANTI-CLIMB)

→ We use only the highest quality materials for our construction fencing, ensuring reliability and longevity on your construction site.



FAST TURNAROUND (FROM ORDERING TO DELIVERING)

→ We offer a fast turnaround time from ordering to delivery or pick up of our construction fencing products, ensuring that your project stays on track.



DELIVERY ALL OVER CANADA & THE UNITED STATES OF AMERICA

→ We offer nationwide delivery throughout Canada and the United States, making us your go-to source for construction fencing no matter where your project is located.





COMPLIANCE WITH ALL SAFETY STANDARDS

→ At Can Industrial, safety is our top priority. We ensure that all of our products meet or exceed industry safety standards, providing a safe and secure work environment for your construction site.



FOLLOW US ON SOCIAL MEDIA

	
INSTAGRAM	TIK TOK
OUR HANDLE	OUR HANDLE
@CANINDUSTRIALSUPPLIERS	@CANINDUSTRIALSUPPLIERS

CONTACT US!

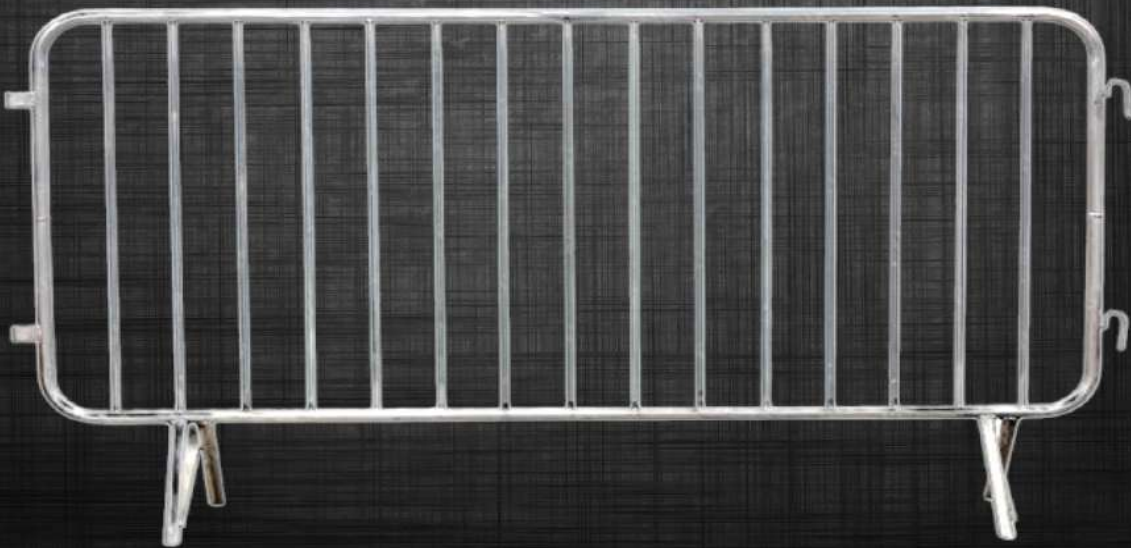


Website: www.canindustrial.com
Telephone: +1 (888) 742-4550
Email Address: Infocanindustrial@gmail.com

Information Subject to Change Without Notice
Dimensions and Weights are Approximate
© All Rights Reserved - Can Industrial 2023



**CONTACT
FOR
SHIPPING
ALL OVER
CANADA &
USA !**



**WWW.CANINDUSTRIAL.COM
1-888-742-4550**