

SHELTER

Installation manual

MODEL:W9.15 X L12 X H4.5M



Congratulations on your purchase of our instant shelter. This unit is a combination of excellent manufacturing and design. It is comprised of a rigid frame and a durable cover. For easy assembly, we have marked all the parts with codes. With proper installation, use and maintenance, your unit will provide many years of good and suitable service.

READ ALL THE INSTRUCTIONS BEFORE ASSEMBLY !

1. The proper erection and installation of this building requires a high level of care and safety. We recommend the safety regulations be complied with during the installation. It includes but is not limited to:

- Safety hats, protective eyewear and protective clothing
- Safety harnesses for all elevated workers
- Proper ladder, cage, and safety operation

2. Site selection: Choose a solid level location for your building. Do not install the building where the ground could not keep the building steady. Do not install the building where the ground could not bear the weight of the building. Do not install the building in soft grass ground or wetland.

3. Be cautious with the surroundings. Keep work area clean. Do not set up it near snow drifts, slippery places, or in wet location. The cover of the building will protect against normal falling leaves and light debris, however, large, fast or sharp falling items etc. may cause a puncture or tear in the cover material. So keep the building away from such harmful things. Be careful with power and heat sources. Do not keep heat sources near the tarpaulin. Do not expose to open flame.

4. Choose a windless day to install the building. It is very difficult to attach the in heavy wind.

5. All snow accumulation on the main cover should be removed as soon as possible. Otherwise, when old snow on the roof becomes hard with new snow falling in, it will increase the burden of the roof badly and will damage the roof.

6. Try to keep the building, especially its base, in a dry condition. This will help the building to have a longer life than keeping it in a wet conditions.

7. The user should be responsible for the parts missing or damage occurred during the installation.

8. Do not make alteration of the frame. Do not hang anything besides included parts to the frame. Damages, consequential damages, or injuries caused by improper installation, alteration, improper use, or damages caused by snow, wind, or any acts of nature are owing to the user. The building is not intended for occupancy for any length of time.

ASSEMBLY PROCEDURE

1. Prepare location and place all unit boxes near location sight. Perform an inventory check before beginning, to be certain all components are available for installation.
2. Secure base plates flanges to vase surface.
3. Assemble every group of arch.
4. Begin frame assembly with front end arch,first interior arch,purlins,etc.
5. Add to assemble other groups of arches.
6. Install main cover over frame.
7. Install end covers over end panels.

Read all the detailed instructions and notices in the following assembly instructions!

MAINTENANCE AND CARE

1. If some parts or the cover were accidentally damaged during the use, contact the local supplier for advises in the repairing method or replacements, so the to prevent from further damage and keep the building in a good condition.
2. When replacing the parts, male certain the whole frame and the parts connected to the replaced parts be well fixed or supported.
3. Same with when attaching the cover, choose a windless day to replace the cover. Begin with making certain all the bolts of the frame and the tensioning equipments be well fixed. When taking off the cover, make sure the related ropes, etc. Be taken off, and the cover will not be blocked during the way. Avoid taking off the cover with heavy big power equipments.
4. For the building with mechanical door. Keep the door closed if it is not used for long time. This helps the mechanical door to have a longer life.
5. To elongate the life of the cover, put small duct tape or foam rubber(provide it by yourself)on the frame that comes to in contact with cover. The tape and foam rubber acts as a cushion to avoid rubbing damage to the cover over years.
6. Periodically(once in half a year or more often),the building should be completely inspected and maintained internally and externally to make certain the building remains properly installed and secured. Including: check all bolts and hardware connectors to be certain they are in place and tightened, he base plates are still fixed firmly, check and adjust the ropes if in need, clean the cover with suitable washing. Allowing dirt and debris to sit on cover over an extended time will damage cover irreparably.

Thanks again for choosing this quality product. The following is the detailed assembly instructions for you starting the assembly.

Code	PARTS LIST	Quantity	Located in box
1	Top roof tube	7	1&2
2	Roof curving tube at shoulder height	10	1
2A	Roof curving tube for front and back panel	4	1
3	Sidewall tube	6	1
3A	Sidewall tube for front and back panel	4	1
3B	Side wall tube for steel wire installation	4	1
4	Horizontal tube	30	1
5L	Base flange in left corner	2	1
5R	Base flange in right corner	2	1
6L	Base flange for left sidewall	2	1
6R	Base flange for right sidewall	2	1
6L-A	Base flange in left side wall for steel wire installation	3	1
6R-A	Base flange in left right wall for steel wire installation	3	1
7	Base flange for front and back panel	4	1
8	Upper vertical tube door	4	1
9	Lower vertical tube door	4	1
10	Middle and lower rail (beside the door)	4	2
11	Door beam	2sets	1
12	Tensioning tube at the bottom of door	4	1
13	Wind brace support tube	8	2
13A	Clip for wind brace support tube	16	1
14	Cover Tensioning tube for roof cover	2sets	1
15	Cover tensioning tube for front and back cover	2sets	1
17	Stake peg	50	2
18	Tie down ratchet	14	1
19	Hexagon Bolt M10*75	200	2
20	Carriage bolt M10*85	40	2
21	Hexagon Bolt M10*85	10	2
22	Hexagon Bolt M10x30	22	2
23	Hexagon Bolt M10x40	4	2
24	Plastic cap for tensioning tube	16	2
25	Door pulley	2sets	1
26	Roof cover	1	2
27	Door cover	2	2
28	Rope for fastening roof cover and door cover	13	2
29	Rope for door	4	2
30	Band for tie down ratchet	14	2
31	Steel wire	8sets	1
32	Anti-wear pad	28	2

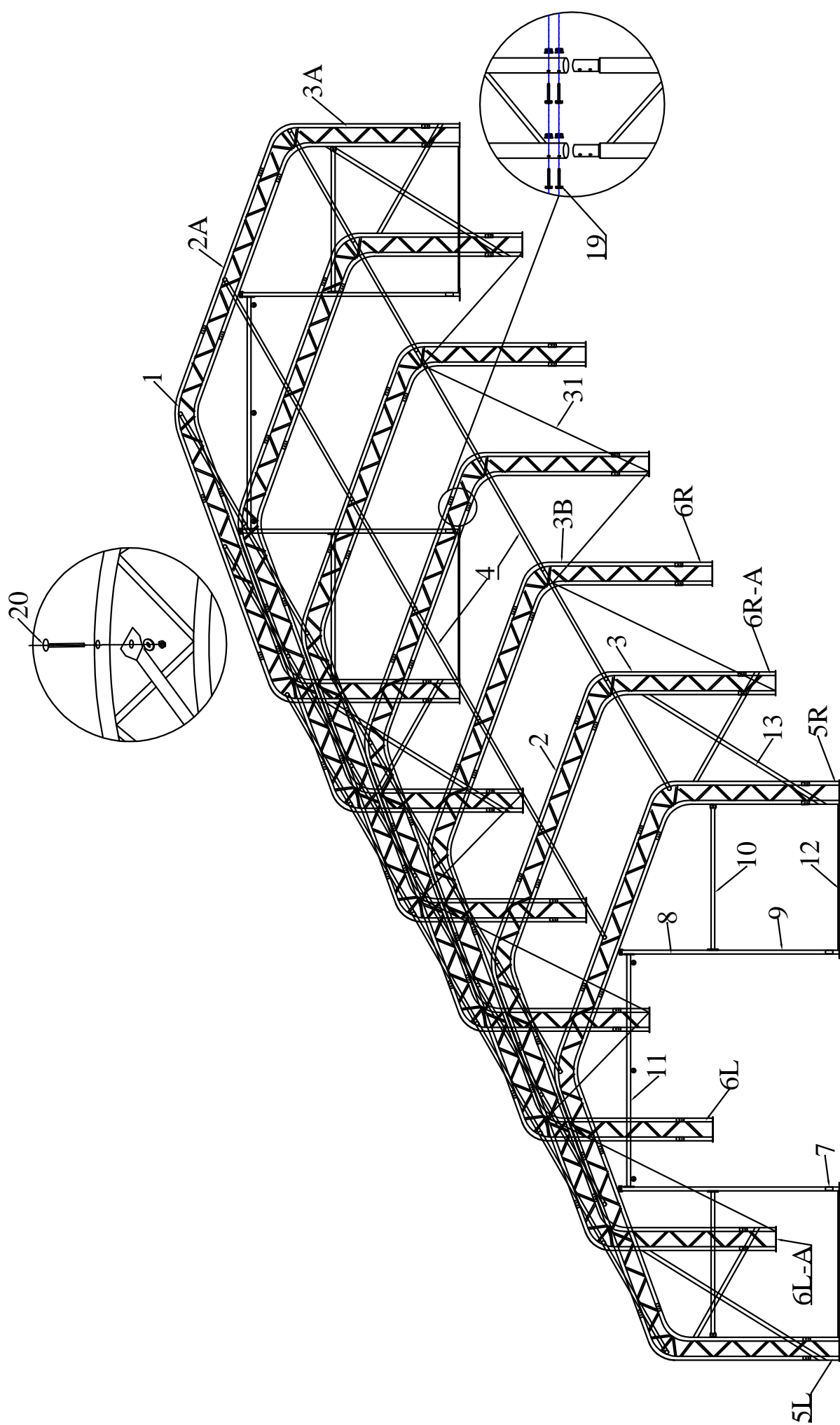


Figure 1
 Sketch of Model 304015T Size: W9.15*L12*H4.5M

Step #1 --ARCH ASSEMBLY

Assemble ALL the arches including the base plates, and LAY them on the ground first. DO NOT erect them until you finish all the arches assembly.

Each arches consist of:

One Top roof tube (Part # 1), Two Roof curving tube (Part # 2/2A), T Two Sidewall tube (Part # 3/3A/3B), Two Base plates (Part #6L/6R/7L/7R)

Connect the arches by Using the hexagon bolts with washers and nuts(part # 19) through predrilled holes in frame members.

NOTE: Please notice that the part code of the arch sections. The sections of middle, front and back arches are not the same. Check with the Part List and the Sketch Figure.

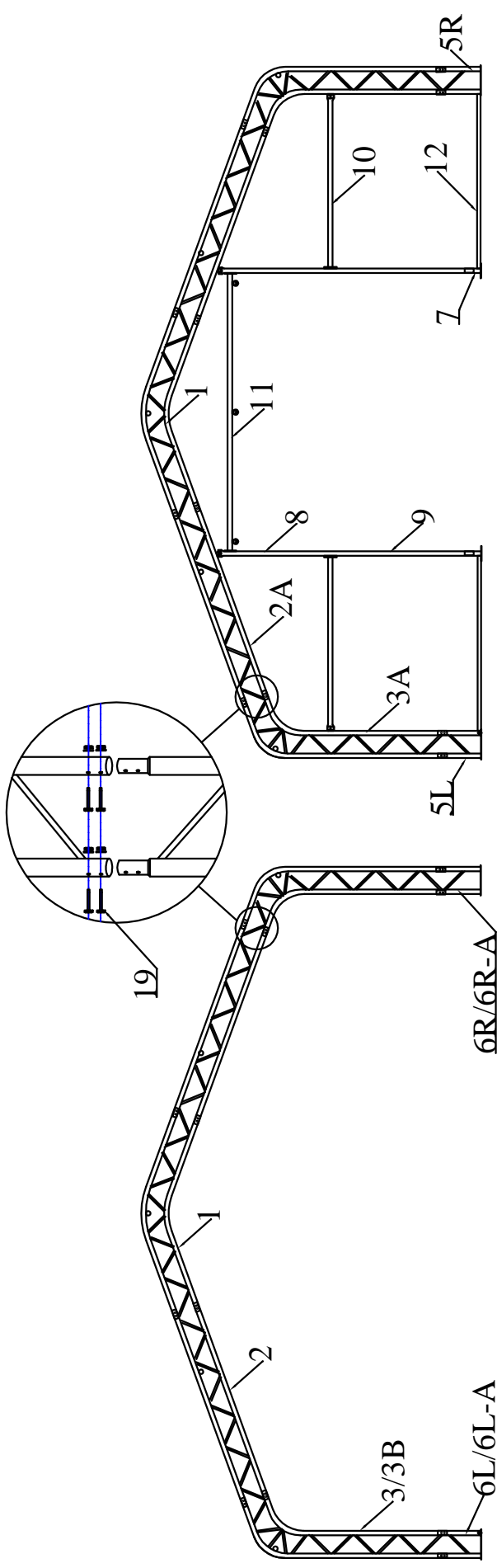


Figure 2 The middle arch

Figure 3 Front and Back Panel Arch

Step #2 --ERECTING ARCHES

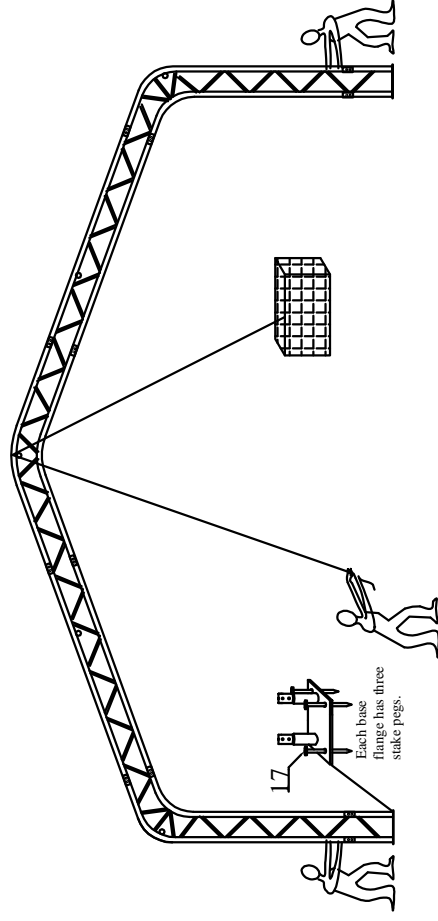


Figure 4 Erecting the Arch

As figure 4 shows, erecting the front arch by using ropes, tie and secure the rope on some heavy object to secure the arch standing temporarily. Then secure the base plates to the ground by using stake pegs(part #24).

Step #3 --Assembling Roof Purlins

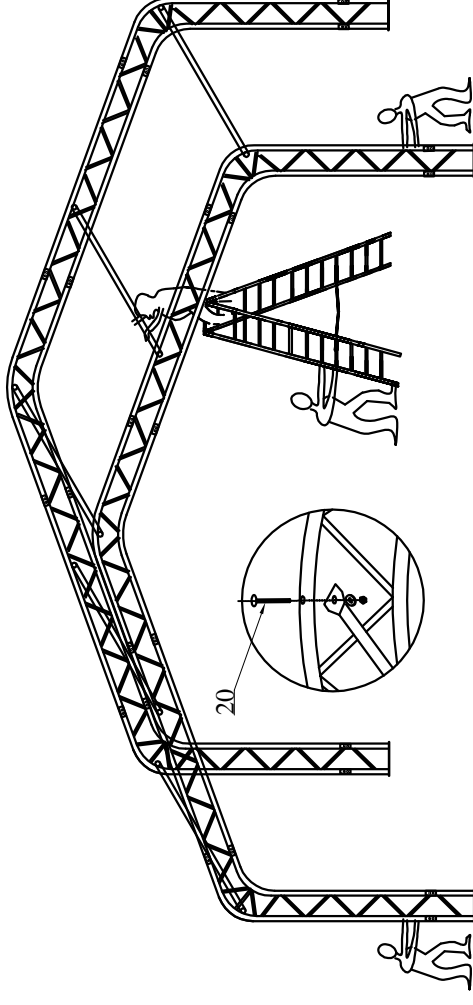
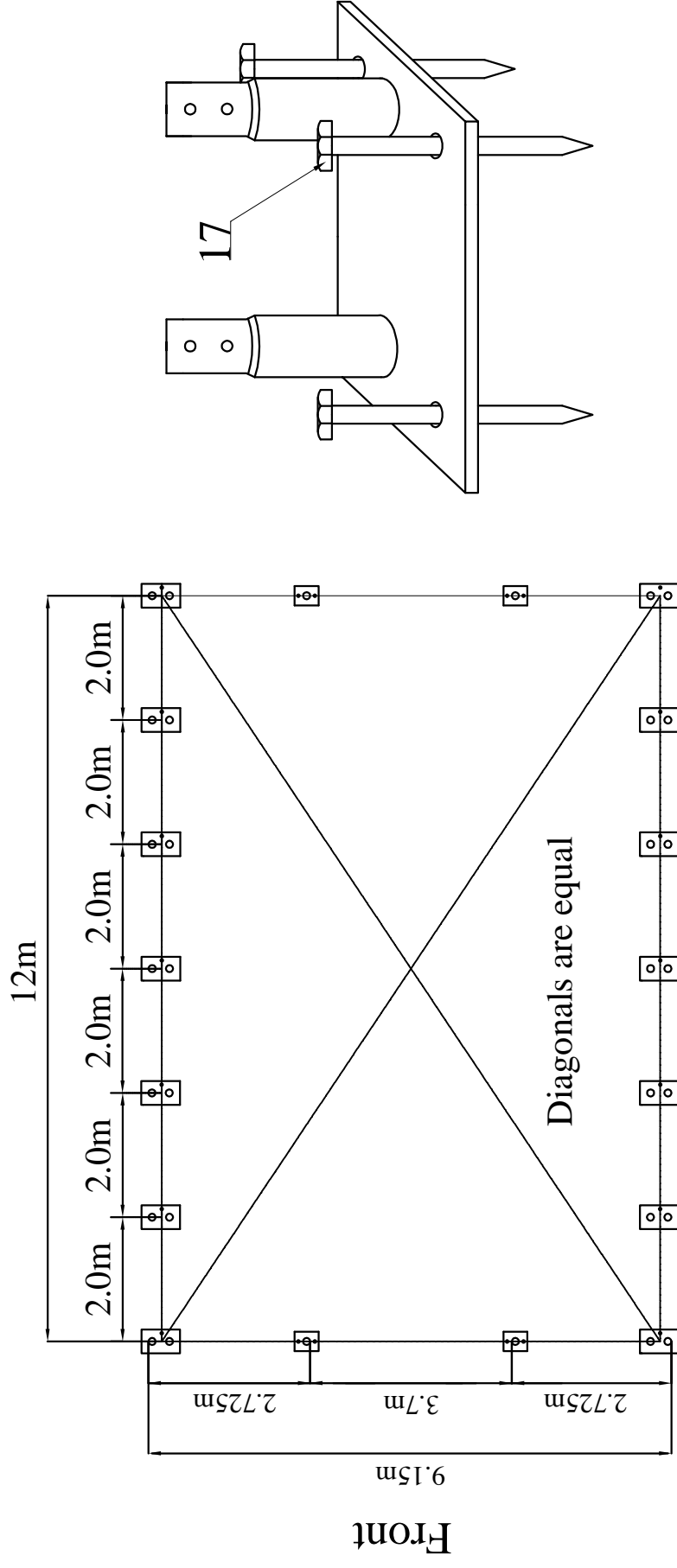


Figure 5

Immediately after erecting the front arch, erect the 2nd arch in the same way. Then connect the two erected arches using Roof Purlin Tubes as figure 5 shows. Secure the Roof Purlin tubes into place using carriage bolts and nuts (part #20).

Figure 6 Position of Base Flanges



The Shelter must be secured to a firm surface that can receive and retain pegs firmly in position. The shelter should be installed on FIRM GROUND, not on SWAMP, SOFT/WET GROUND. The Base Flanges must be secured so they cannot be moved.

Step #4 --WIND STABILIZERS CABLES AND TURNBUCKLES

On each side of frame, between the first and last two groups of arches, and on the front&back panel frame, cables with turnbuckle are provided to align and strengthen frame before installing cover. After installing all cables, tighten the turnbuckles slightly to adjust the arches vertically and to add rigidity.

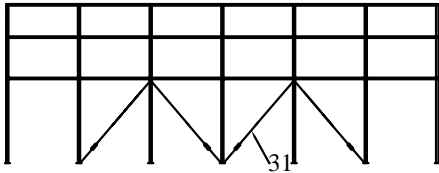
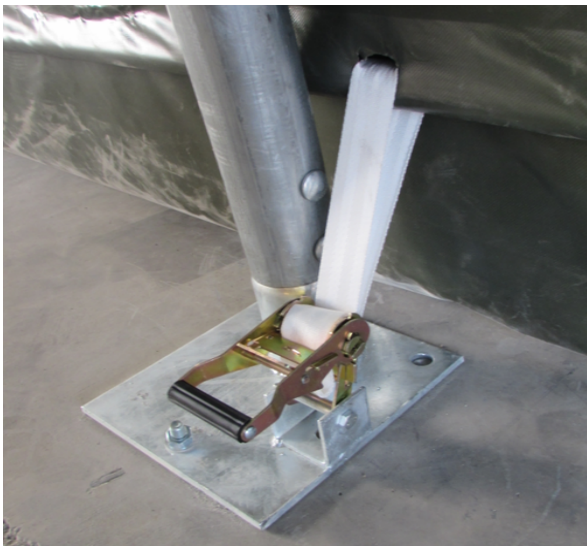


Figure 7 The position of windstabilizers (turnbuckle and cable) at the sidewall.

Step #5 --BOLT RATCHETS TO BASE FLANGES



ROOF COVER INSTALLATION

Step #6 --POSITION ROOF COVER

As figure 8 shows, when ready to install Roof Cover, unpack cover and lay parallel to building frame on one side. Cover must be pulled over top of frame assembly without being snagged or stressed on any frame members. Use multiple ropes over top of frame as shown in picture below. Having another person inside frame on a ladder to assist in getting Roof Cover over frame will insure the cover will go on without any damage.

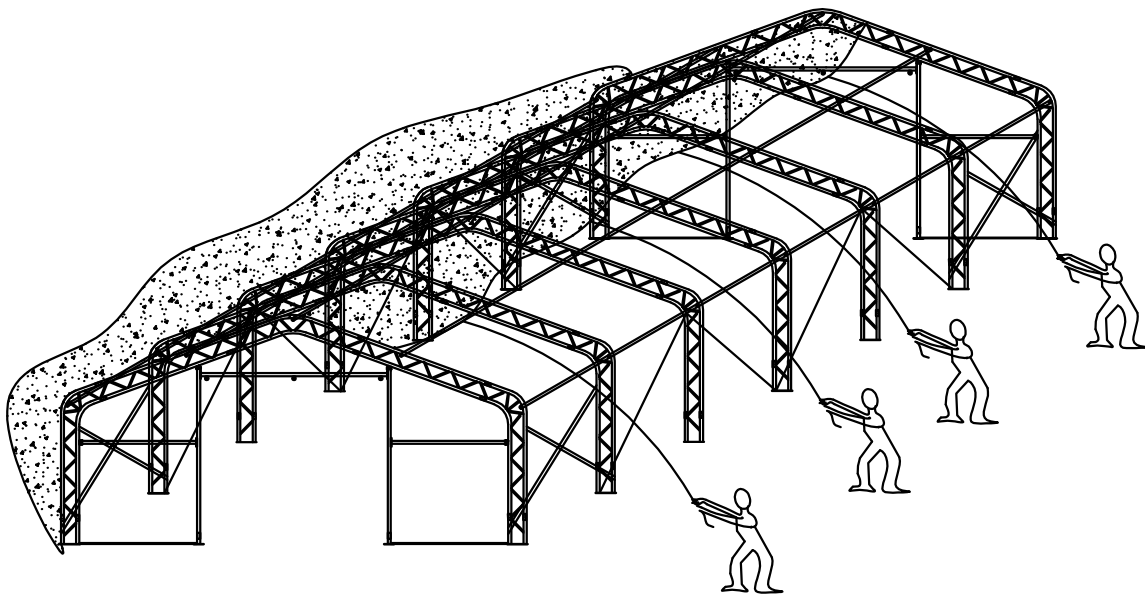
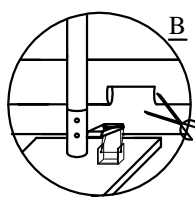
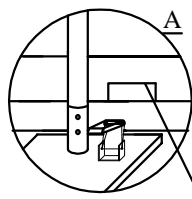
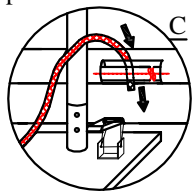


Figure 8 Pull the Roof Cover over the frame evenly

Then make the cuts using
forfex along the outlines.



First circle the band for tie
down ratchet (part#30)
around the tensioning tube
through the cuts on the
pocket of the roof cover.



Before inserting the cover tensioning
tube(part #14) into pocket of roof cover,
you need to make cuts for band of
Ratchet on the cover first. Firstly please
draw the outline of the cuts according to
the position of Ratchet. The position of
cuts should be right upon the ratchets.

draw the outline of cuts

Then put the bands
through the reel of the
ratchet, and tension
the band by ratchet.

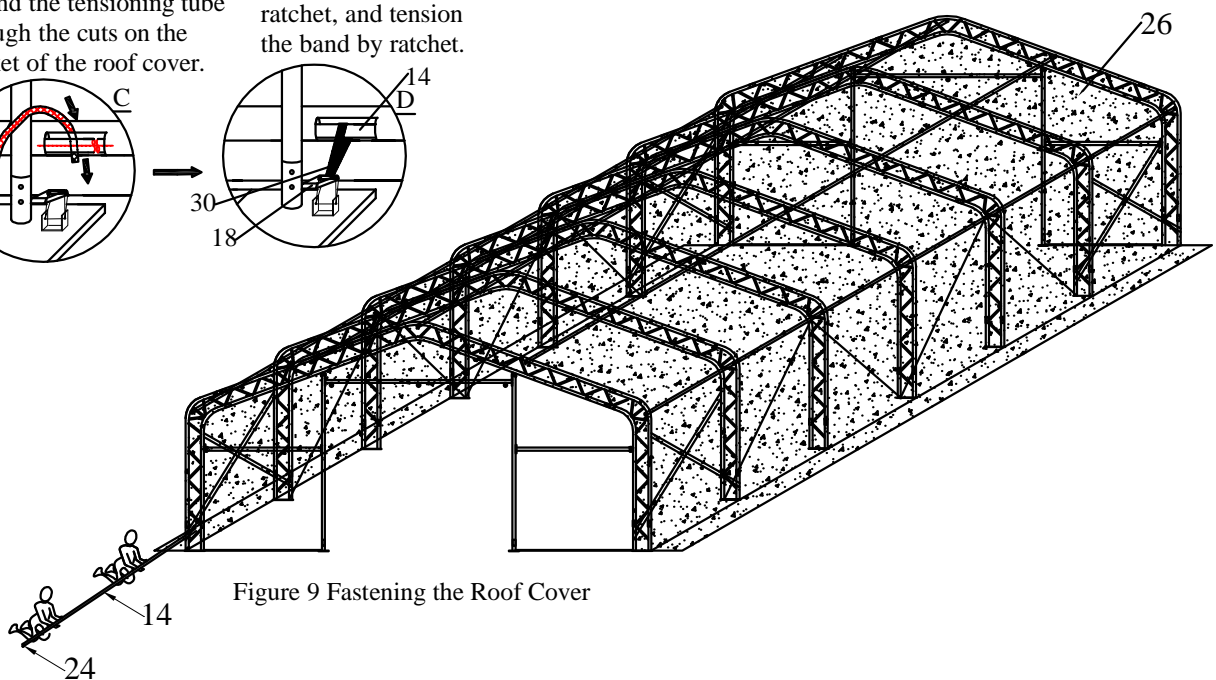
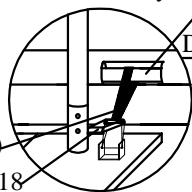


Figure 9 Fastening the Roof Cover

Step #6 --TENSION COVER ON FRAME FROM SIDE-TO-SIDE

As Figure 9 shows, when Roof Cover is over top of Frame Assembly, insert Cover Tensioning Tubes into pockets along both sides of Roof Cover. Center Roof Cover over Frame assembly both side to side and front to back. Align one side of Roof Cover evenly front to back. Add Band for Tie Down Ratchet at each point along the cover opening, as shown. Put Band for Tie Down Ratchets over Cover Tensioning Tubes at each Base Plate along one side. Bands do not attach to Tensioning Tubes, but loop around and secure at both ends on ratchet.

Next take up slack in tie bands by ratcheting the mechanisms, tightening cover. Evenly adjust ratchets on both sides of roof cover to take wrinkles out of roof cover. **DO NOT** fully tighten cover yet. Leave adequate slack so that cover can also be adjusted front to back in next step.

Step #7 --ASSEMBLE FRONT & REAR COVER

Secure the Front and Back Cover to the arch panel by using the ropes provided.

Main Cover Edge Tie Off - Once both Front and Rear Covers are installed, the Roof Cover Edge flap, front and rear, should be tightened and tied off. Begin by pulling the remaining Roof Cover over the Frame arch, so the rope pocket is over the edge of the frame. Tie off the rope that goes through the rope pocket on one side. The rope ties off to the loop that is located on the Base Flange in Corner (6L or 6R). Moving to the other side, begin to pull the rope down.

Hold the rope in hand, and push down at the bottom of the rope with a foot. Pull the rope tight, and tie off to the welded hoop on the Base Flange. As you are pulling the edge rope, it will be necessary to adjust the excess material that will collect along the rope packet. Adjust the material so that it is not bunched up and it does not pull the roof cover to one side or the other. Once the Front is completed, repeat the process on the Rear flap of the Roof Cover.

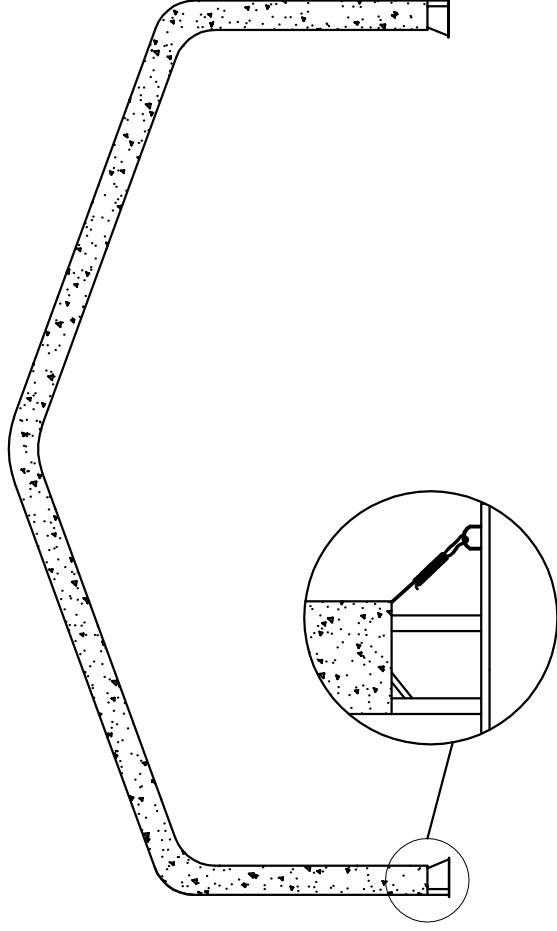


Figure 10 Fastening the two ends of the Roof Cover

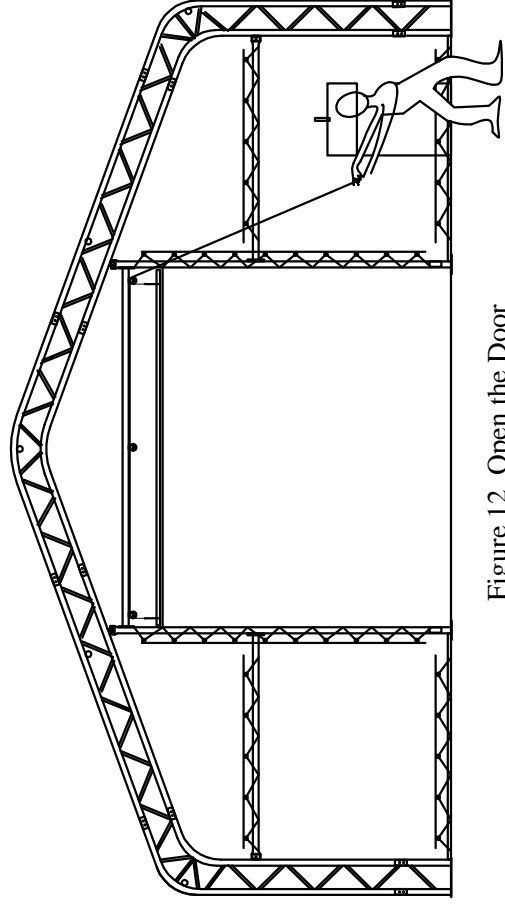


Figure 12 Open the Door

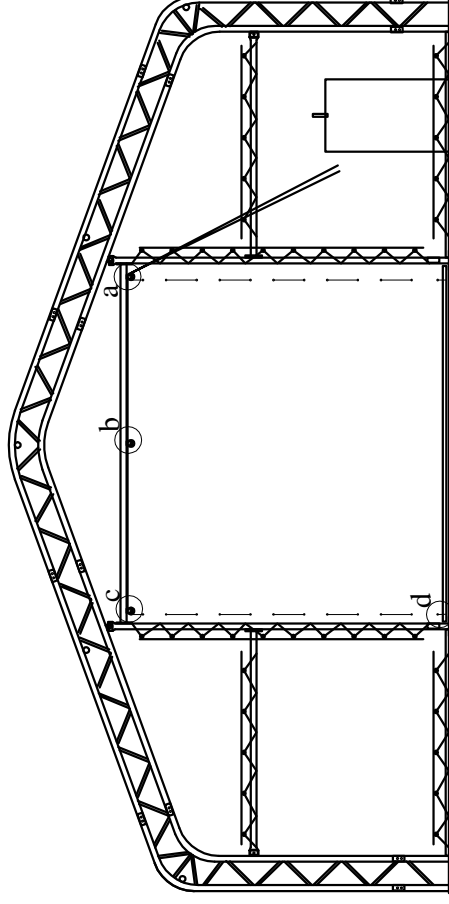


Figure 11 Installation of the Front and Back cover

