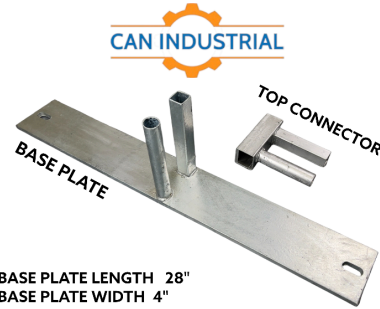


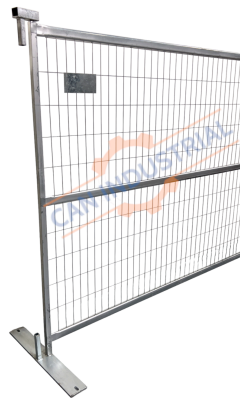
## 6' H x 10' L - Premium Galvanized Square Tube Fence Panel



**BASE PLATE LENGTH 28"**  
**BASE PLATE WIDTH 4"**  
**BASE PLATE THICKNESS 10mm**  
**SPRINKLE HEIGHT 6.5"**  
**TOP CONNECTOR HEIGHT 6"**  
**TOP CONNECTOR WIDTH 5"**

### SPECIFICATIONS

<b>HEIGHT x LENGTH</b>	<b>6' x 10'</b>
<b>MESH OPENING</b>	<b>2" x 6"</b>
<b>TUBE THICKNESS</b>	<b>1.3 MM</b>
<b>WIRE DIAMETER</b>	<b>3.5 MM</b>
<b>BASE PLATE DIMENSIONS</b>	<b>28" x 4"</b>
<b>BASE PLATE THICKNESS</b>	<b>10 MM</b>
<b>APPROXIMATE SET WEIGHT</b> (1 PANEL + 1 BASE PLATE + 1 TOP CONNECTOR)	<b>~ 60 LBS (27.2 KG)</b>



### CONTACT US!

Website: [www.canindustrial.com](http://www.canindustrial.com)  
 Telephone: +1 (888) 742-4550  
 Email Address: [Infocanindustrial@gmail.com](mailto:Infocanindustrial@gmail.com)

Information Subject to Change Without Notice  
 Dimensions and Weights are Approximate  
 © All Rights Reserved - Can Industrial 2023