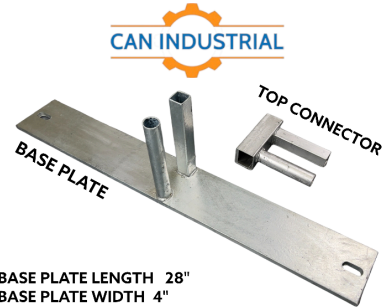


6' H x 10' L - AAA Galvanized Square Tube Fence Panel



BASE PLATE LENGTH 28"
BASE PLATE WIDTH 4"
BASE PLATE THICKNESS 10mm
SPRINKLE HEIGHT 6.5"
TOP CONNECTOR HEIGHT 6"
TOP CONNECTOR WIDTH 5"

SPECIFICATIONS

HEIGHT x LENGTH	6' x 10'
MESH OPENING	2" x 5.5"
TUBE THICKNESS	1.5 MM
WIRE DIAMETER	3.5 MM
BASE PLATE DIMENSIONS	28" x 4"
BASE PLATE THICKNESS	10 MM
APPROXIMATE SET WEIGHT (1 PANEL + 1 BASE PLATE + 1 TOP CONNECTOR)	~ 70 LBS (31.8 KG)



CONTACT US!

Website: www.canindustrial.com
 Telephone: +1 (888) 742-4550
 Email Address: Infocanindustrial@gmail.com