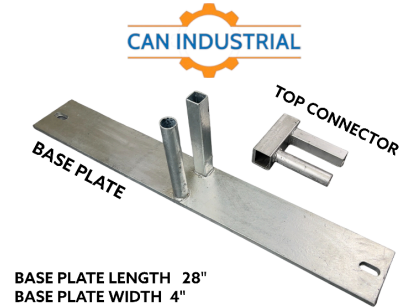
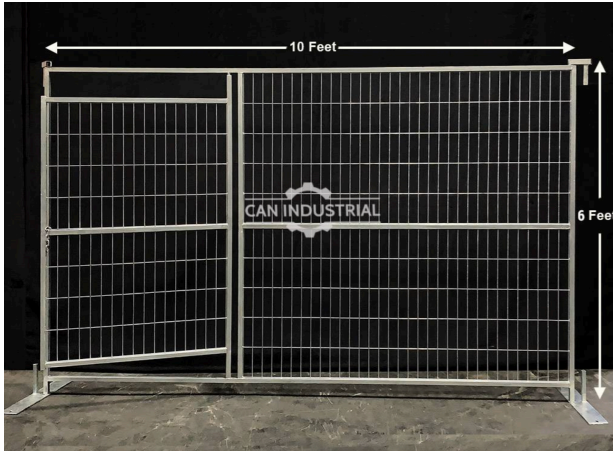


## 6' H x 10' L - Galvanized Square Tube Man Gate



BASE PLATE LENGTH 28"  
 BASE PLATE WIDTH 4"  
 BASE PLATE THICKNESS 10mm  
 SPRINKLE HEIGHT 6.5"  
 TOP CONNECTOR HEIGHT 6"  
 TOP CONNECTOR WIDTH 5"

### SPECIFICATIONS

<b>HEIGHT x LENGTH</b>	<b>6' x 10'</b>
<b>MESH OPENING</b>	<b>2" x 4"</b>
<b>TUBE THICKNESS</b>	<b>1.5 MM</b>
<b>WIRE DIAMETER</b>	<b>3.5 MM</b>
<b>BASE PLATE DIMENSIONS</b>	<b>28" x 4"</b>
<b>BASE PLATE THICKNESS</b>	<b>10 MM</b>
<b>APPROXIMATE SET WEIGHT</b> (1 PANEL + 1 BASE PLATE + 1 TOP CONNECTOR)	<b>~ 70 LBS (31.8 KG)</b>

### CONTACT US!

Website: [www.canindustrial.com](http://www.canindustrial.com)  
 Telephone: +1 (888) 742-4550  
 Email Address: [Infocanindustrial@gmail.com](mailto:Infocanindustrial@gmail.com)